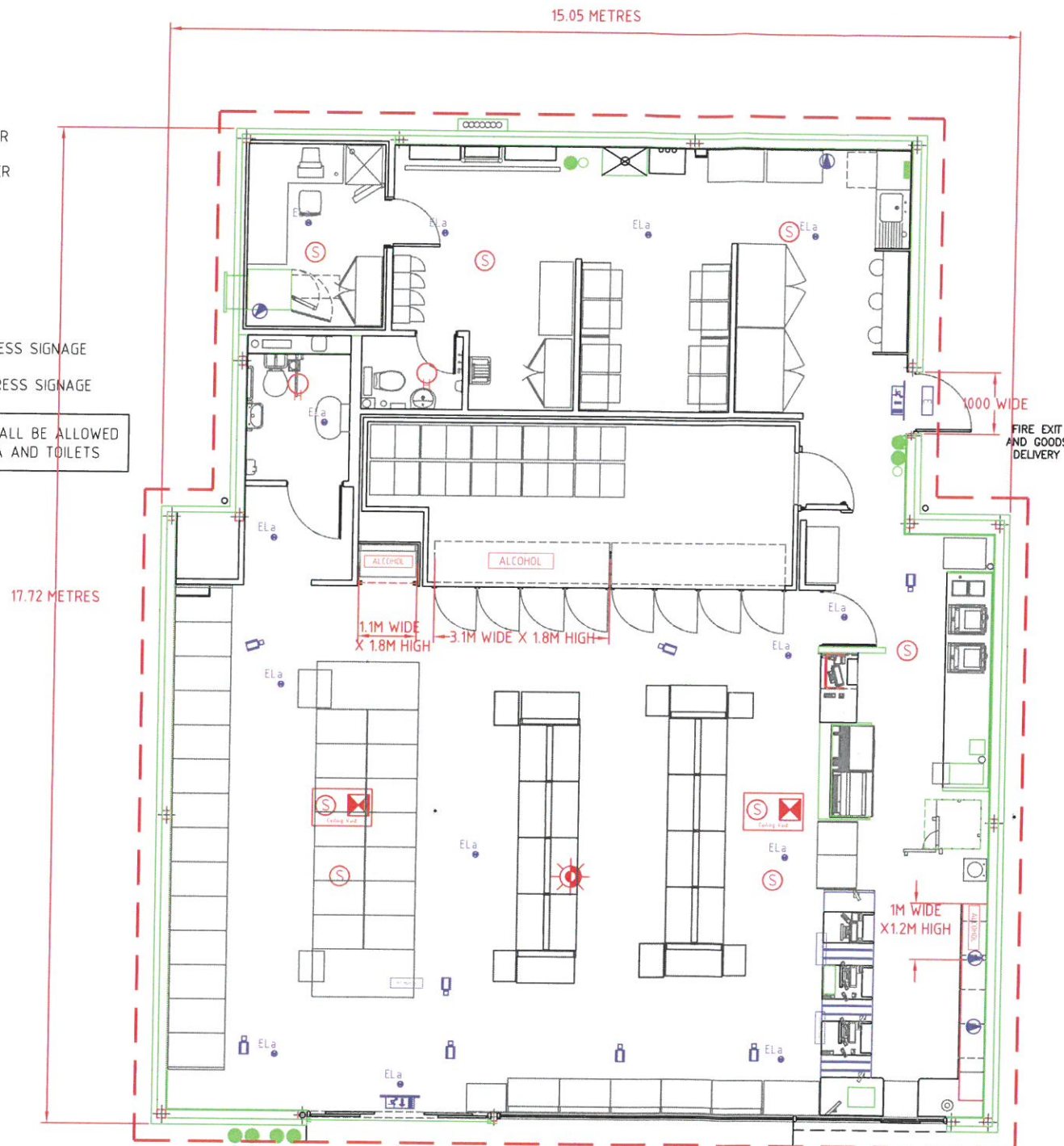


KEY

- EMERGENCY LIGHTING
- DOMED CAMERA
- CAMERA
- NEW L.C.D. CEILING MONITOR
- POWDER FIRE EXTINGUISHER
- CO FIRE EXTINGUISHER
- FIRE BLANKET
- SMOKE DETECTOR
- HEAT DETECTOR
- EMERGENCY INTERNAL EGRESS SIGNAGE
- EXTERNAL EMERGENCY EGRESS SIGNAGE

CHILDREN AND YOUNG PERSONS SHALL BE ALLOWED ENTRY TO EXISTING SALES AREA AND TOILETS



4No TROLLEYS EACH COMPRISING OF 2No 9KG DRY POWDER 1No SAND BUCKET

Entrance

PREMISES TO BE LICENSED FOR THE SALE OF ALCOHOL FOR CONSUMPTION OFF THE PREMISES



SITE O.S. LOCATION MAP 1:1250

SHOP LAYOUT

1:100

NO	DATE	DESCRIPTION
REVISIONS		
STATUS		
BP OIL UK Ltd Asset Development		
BP OIL UK Ltd Asset Development WITAN GATE HOUSE MILTON KEYNES BUCKS MK9 1ES Tel No 01908 853000 Fax No 01908 853999		PEEBLES SF CONNECT INNERLEITHEN ROAD PEEBLES EH45 8 AZ
DRAWN: M. MERRILL DATE: APRIL 2018 DESIGN CHECKED: DATE: APPROVED: DATE: ATRAEK CHECKED: DATE: SCALE: 1:100@A3	PREMISES LICENSE APPLICATION LAYOUT	
DRAWING NUMBER 15296 - 79 - PL		REV
ARCHITECT:		
<small>This drawing has been produced in accordance with BP Oil UK Ltd retail design standards & current legal requirements. Copyright of BP Oil UK Ltd. Illegal use is prohibited. Reproduction only with permission of BP Oil UK Ltd. BP Oil UK Ltd, Asset Development, 500-600 Witam Gate West, Milton Keynes, MK9 1ES.</small>		

A3 ORIGINAL PLOT SIZE